

GATE VALVES

BUTTERFLY VALVES

CHECK VALVES

STRAINERS

FLOW DETECTOR

BALL VALVE

TEST AND DRAIN VALVE

RAISER MANIFOLD

HOSE RACK



RESILIENT OS&Y GATE VALVE

Mod. XZ41X | RXZ31X

SPECIFICATIONS

Available Sizes:

From 2" to 12"

Connection Ends:

XZ41X - Flange to ASME B16.1 CL 125

RXZ31X - Mechanical Joint

Working Pressure:

300 PSI

Temperature Range:

0°C - 100°C

Coating:

Fusion Bonded Epoxy Coating Complies with ANSI/ AWWA C550

Brand:

MECH



XZ41X



RXZ31X

MATERIAL SPECIFICATIONS

1	Valve body	ASTM A536, 65-45-12
2	Resilient wedge disc	ASTM A536, 65-45-12+EPDM
3	Stem	Stainless Steel
4	Bonnet Gasket	EPDM
5	Bonnet	ASTM A536, 65-45-12
6	Stem Packing	EPDM
7	Yoke	ASTM A536, 65-45-12
8	Stem bushing	Brass Hpb59-1
9	Gland	ASTM A536, 65-45-12

10	Stem Nut	Brass Hpb59-1
11	Handwheel	ASTM A536, 65-45-12
12	Washer	Brass Hpb59-1
13	Gland Nut	Carbon Steel Zinc Plated
14	Stud	Carbon Steel Zinc Plated
15	Flat Washer	Carbon Steel Zinc Plated
16	Nut	Carbon Steel Zinc Plated
17	O-Ring	NBR
18	Plug	C89833

INTERNATIONAL APPROVAL

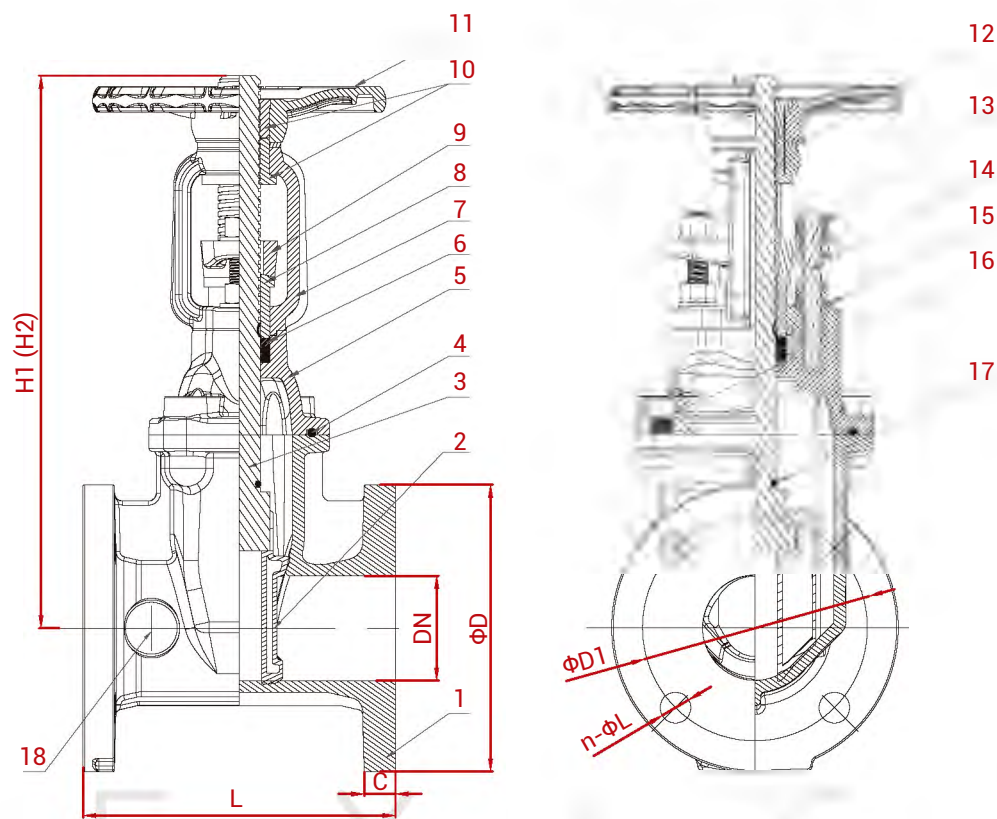


SUBMITTAL INFORMATION

PROJECT:	CONTRACTOR:	DATE:
ENGINEER:	SPECIFICATION REFERENCE:	SYSTEM TYPE:
LOCATIONS:	COMMENTS:	

RESILIENT OS&Y GATE VALVE

Mod. XZ41X | RXZ31X



DIMENSIONS

DN		Dimensions(mm)						
Inch	mm	L	H1(Close)	H2(Open)	D	D1	C	n- Φ L
2"	50	178	348	400	152	120.7	16.0	4- Φ 19.1
2.5"	65	190	373	440	178	139.7	17.5	4- Φ 19.1
3"	80	203	408	490	191	152.4	19.1	4- Φ 19.1
4"	100	229	471	573	229	190.5	19.1	8- Φ 19.1
5"	125	254	541	665	254	215.9	19.1	8- Φ 22.2
6"	150	267	601	755	279	241.3	19.1	8- Φ 22.2
8"	200	292	774	975	343	298.5	22.2	8- Φ 22.2
10"	250	330	939	1193	406	362.0	23.8	12- Φ 25.4
12"	300	356	1065	1370	483	431.8	25.4	12- Φ 25.4
14"	350	381	1403	1817	533	476.3	25.4	12- Φ 28.6
16"	400	406	1403	1817	597	539.8	25.4	16- Φ 28.6
18"	450	432	1788	2308	635	577.9	25.4	16- Φ 31.8
20"	500	457	1809	2329	699	635	28.6	20- Φ 31.8
24"	600	508	2025	2649	813	749.3	30.1	20- Φ 34.9

FLANGED RESILIENT OS&Y GATE VALVE

Mod. XZ41X | RXZ31X

DESIGN

We reserve the right to change or modify product designs, specifications and/or standard equipment without notice and without incurring obligation.

SALES

Prices and Terms and Conditions of Sale are subject to change without notice.

WARRANTY

From incoming inspection to finished product, quality is checked and monitored in the whole process. Each step of the manufacturing process is carefully documented, regularly reviewed for revision control and updating standard.

Quality procedures are constantly monitored and updated to assure that only the highest and most consistent quality products are supplied to our valued customers.

For more information about warranty policy, please contact us.

RESILIENT NRS GATE VALVE WITH POST FLANGE MOD. Z45XC-2 | Z35XC-2



SPECIFICATIONS

Available Sizes:

From 4" to 16"

Connection Ends:

Z45XC-2: Flange to ASME B16.1 CL 125

Z35XC-2: Mechanical Joint

Working Pressure:

300 PSI

Temperature Range:

0°C - 100°C

Coating:

Fusion Bonded Epoxy Coating in accordance with ANSI/AWWA C550

Brand: **MECH**



Z45XC-2



Z35XC-2

MATERIAL SPECIFICATIONS

1	Valve body	ASTM A536, 65-45-12
2	Resilient wedge disc	ASTM A536, 65-45-12+EPDM
3	Stem	Stainless Steel
4	Bonnet Gasket	EPDM
5	Bonnet	ASTM A536, 65-45-12
6	O-Ring	NBR
7	Gland	ASTM A536, 65-45-12
8	Post Flange	ASTM A536, 65-45-12
9	Square Operating Nut	ASTM A536, 65-45-12
10	Bolt	Carbon Steel Zinc Plated
11	Flat Washer	Carbon Steel Zinc Plated

12	Nut	Carbon Steel Zinc Plated
13	Flat Washer	Carbon Steel Zinc Plated
14	Ring Wiper	EPDM
15	O-Ring	NBR
16	Axis Guide	Brass Hpb59-1
17	Washer	Brass Hpb59-1
18	O-Ring	NBR
19	Nut	Carbon Steel Zinc Plated
20	Wedge Nut	Brass Hpb59-1

INTERNATIONAL APPROVAL

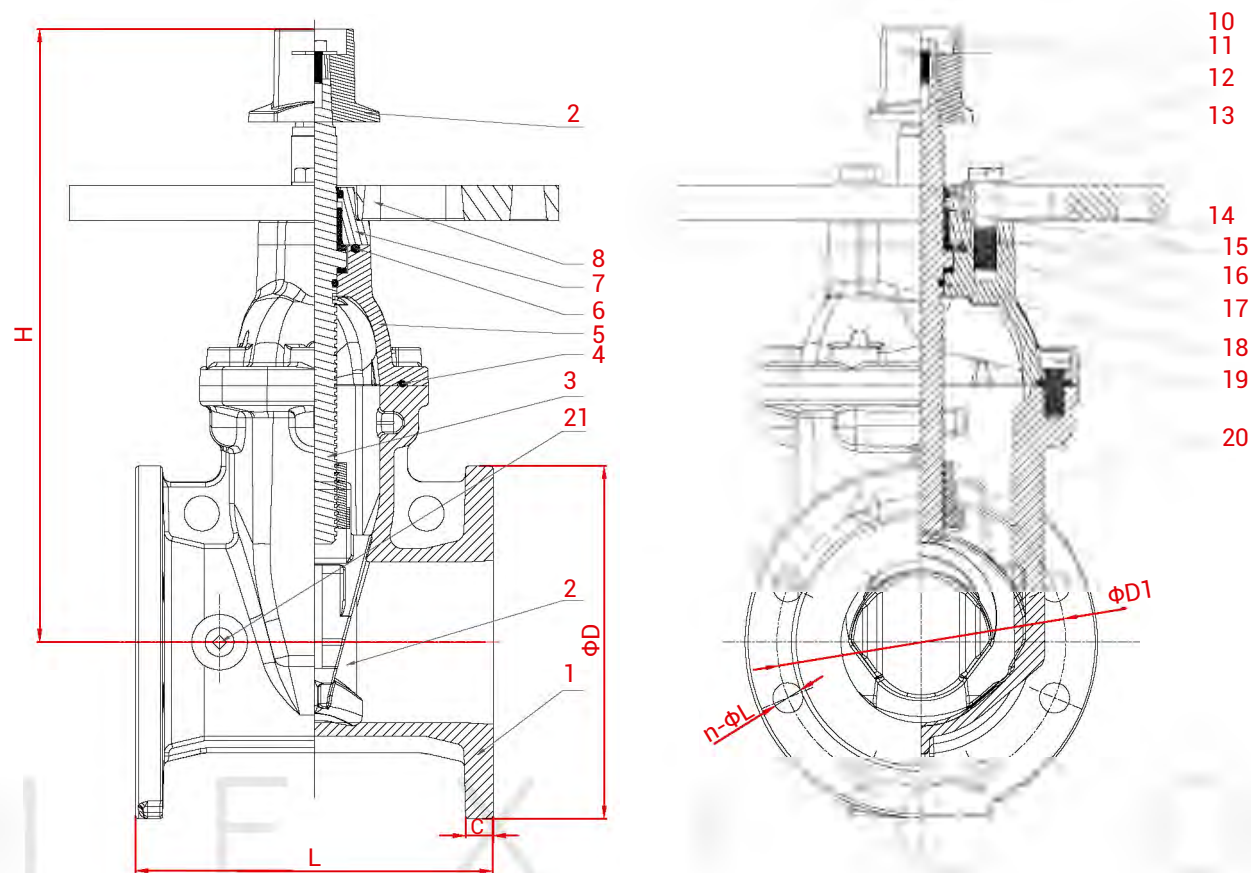


SUBMITTAL INFORMATION

PROJECT:	CONTRACTOR:	DATE:
ENGINEER:	SPECIFICATION REFERENCE:	SYSTEM TYPE:
LOCATIONS:	COMMENTS:	

RESILIENT NRS GATE VALVE WITH POST FLANGE

MOD. Z45XC-2 | Z35XC-2



DIMENSIONS

DN		Dimensions(mm)					
Inch	mm	L	H	D	D1	C	n-Φ L
4"	100	229	395	229	190.5	19.1	8-Φ 19.1
5"	125	254	432	254	215.9	19.1	8-Φ 22.2
6"	150	267	475	279	241.3	19.1	8-Φ 22.2
8"	200	292	585	343	298.5	22.2	8-Φ 22.2
10"	250	330	656	406	362	23.8	12-Φ 25.4
12"	300	356	751	483	431.8	25.4	12-Φ 25.4
14"	350	381	952	533	476.3	25.4	12-Φ 28.6
16"	400	406	952	597	539.8	25.4	16-Φ 28.6

RESILIENT NRS GATE VALVE WITH POST FLANGE

MOD. Z45XC-2 | Z35XC-2

DESIGN

We reserve the right to change or modify product designs, specifications and/or standard equipment without notice and without incurring obligation.

SALES

Prices and Terms and Conditions of Sale are subject to change without notice.

WARRANTY

From incoming inspection to finished product, quality is checked and monitored in the whole process. Each step of the manufacturing process is carefully documented, regularly reviewed for revision control and updating standard.

Quality procedures are constantly monitored and updated to assure that only the highest and most consistent quality products are supplied to our valued customers.

For more information about warranty policy, please contact us.

GROOVED BUTTERFLY VALVE WITH TAMPER SWITCH Mod. XD381X

SPECIFICATIONS

Available Sizes:

From 2" to 12"

Connection Ends:

Grooved to AWWA C606

Working Pressure:

300 PSI

Temperature Range:

0°C - 100°C

Coating:

Fusion Bonded Epoxy Coating in accordance with ANSI/AWWA C550

Design Standard:

MSS SP-67

Top Flange Standard:

ISO 5211

Brand: **MECH**



MATERIAL SPECIFICATIONS

1	Body	ASTM A536, 65-45-12
2	O-Ring	NBR
3	Stub Shaft	AISI 431
4	Disc	ASTM A536, 65-45-12+EPDM
5	Drive Shaft	AISI 431

6	Hex Nut	Carbon Steel Zinc plated
7	Signal Gearbox	ASTM A536, 65-45-12
8	O-Ring	NBR

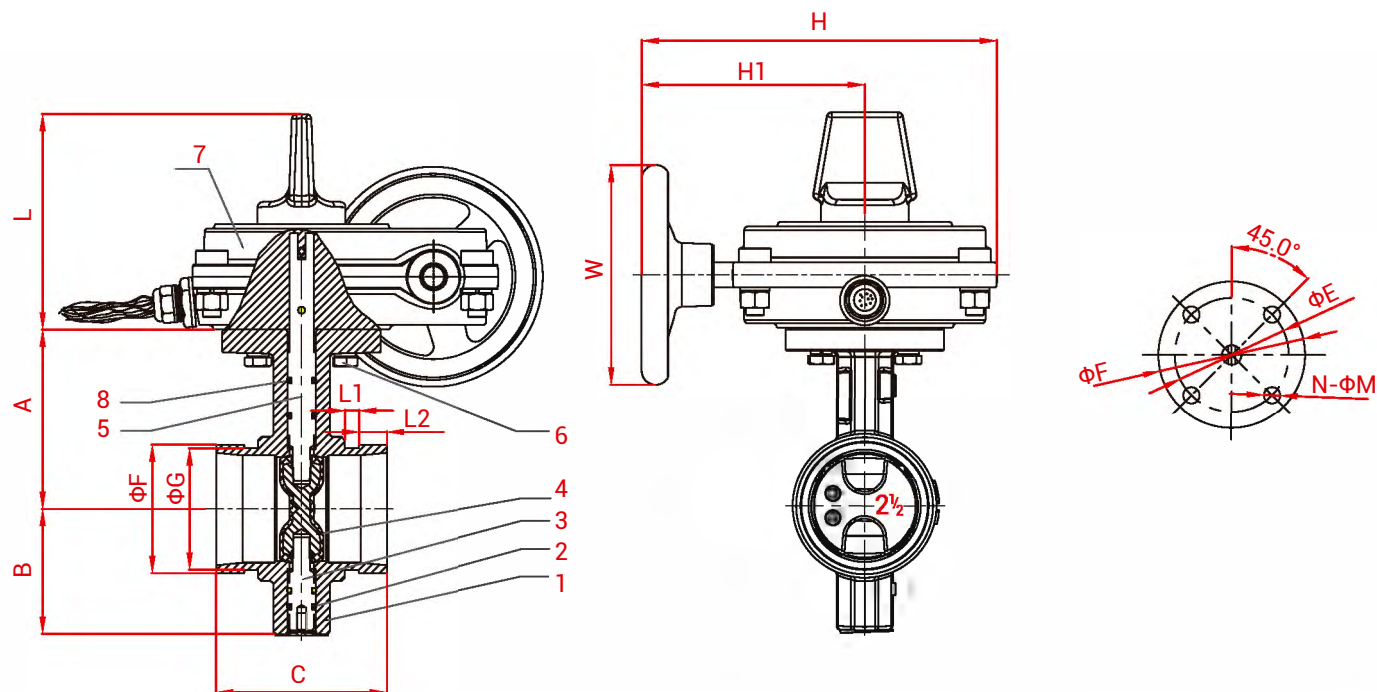
INTERNATIONAL APPROVAL



SUBMITTAL INFORMATION

PROJECT:	CONTRACTOR:	DATE:
ENGINEER:	SPECIFICATION REFERENCE:	SYSTEM TYPE:
LOCATIONS:	COMMENTS:	

GROOVED BUTTERFLY VALVE WITH TAMPER SWITCH Mod. XD381X

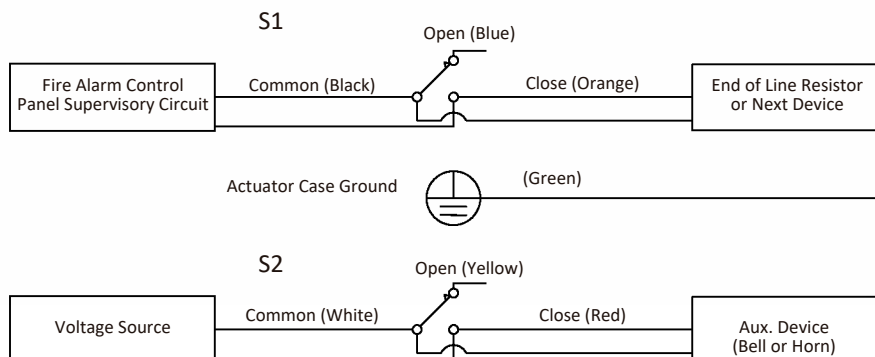


DIMENSIONS

DN		Dimensions(mm)														
Inch	mm	A	B	C	F	G	L	L1	L2	H1	H	W	Φ E	Φ F	N-Φ M	ISO521 1
2"	50	89	65	81	60.3	57.15	122.5	7.93	15.88	127	202.2	125	70	90	4-Φ 10	F07
2.5"	65	102	71	97	73.0	69.09	122.5	7.93	15.88	127	202.2	125	70	90	4-Φ 10	F07
3"	80	109	81	97	88.9	84.94	122.5	7.93	15.88	127	202.2	125	70	90	4-Φ 10	F07
4"	100	128	95	116	114.3	110.08	122.5	9.53	15.88	127	202.2	125	70	90	4-Φ 10	F07
5"	125	141	111	148	141.3	137.03	122.5	9.53	15.88	127	202.2	125	70	90	4-Φ 10	F07
6"	150	153	133	148	168.3	163.96	122.5	9.53	15.88	139.5	215	225	70	90	4-Φ 10	F07
8"	200	184	164	133	219.1	214.40	122.5	11.10	19.05	198.5	274	225	102	125	4-Φ 12	F10
10"	250	216	196	159	273.1	268.28	122.5	12.70	19.05	198.5	274	225	102	125	4-Φ 12	F10
12"	300	254	226	165	323.9	318.29	132.0	12.70	19.05	198.5	293.5	225	102	125	4-Φ 12	F10

Note: Valve must not be installed with disc in full open position. Disc must be partly closed so that no part is protruding beyond end of valve body.

SWITCH WIRING DIAGRAM



GROOVED BUTTERFLY VALVE WITH TAMPER SWITCH Mod. XD381X

DESIGN

We reserve the right to change or modify product designs, specifications and/or standard equipment without notice and without incurring obligation.

SALES

Prices and Terms and Conditions of Sale are subject to change without notice.

WARRANTY

From incoming inspection to finished product, quality is checked and monitored in the whole process. Each step of the manufacturing process is carefully documented, regularly reviewed for revision control and updating standard.

Quality procedures are constantly monitored and updated to assure that only the highest and most consistent quality products are supplied to our valued customers.

For more information about warranty policy, please contact us.

FLANGED RESILIENT SWING CHECK VALVE

Mod. H44X2

SPECIFICATIONS

Available Sizes:

From 2" to 12"

Connection Ends:

Flange to ASME B163.1 CL 125

Working Pressure:

300 PSI

Temperature Range:

0°C - 100°C

Coating:

Fusion Bonded Epoxy Coating in accordance with ANSI/AWWA C550

Brand: **MECH**



MATERIAL SPECIFICATIONS

1	Valve body	ASTM A536, 65-45-12
2	Bonnet	ASTM A536, 65-45-12+EPDM
3	Eye Bolt	Carbon Steel Zinc Plated
4	O-Ring	NBR
5	Hinge Pin	AISI 304
6	Hinge Bushing	Brass ASTM B16 C36000/ Hpb63-3
7	Seat Ring	Bronze ASTM B62 C83600/ZQSn5-5-5 (Pressed Fit)
8	Disc Seal Bolt	AISI 304
9	Retainer Washer	Bronze ASTM B62 C83600/ZQSn5-5-5
10	Disc Sealing Ring	EPDM

11	Disc	ASTM A536, 65-45-12
12	Clapper Arm	ASTM A536, 65-45-12
13	Stud Bushing	Brass ASTM B16 C36000/ Hpb63-3
14	O-Ring	NBR
15	Nut	AISI 304

INTERNATIONAL APPROVAL

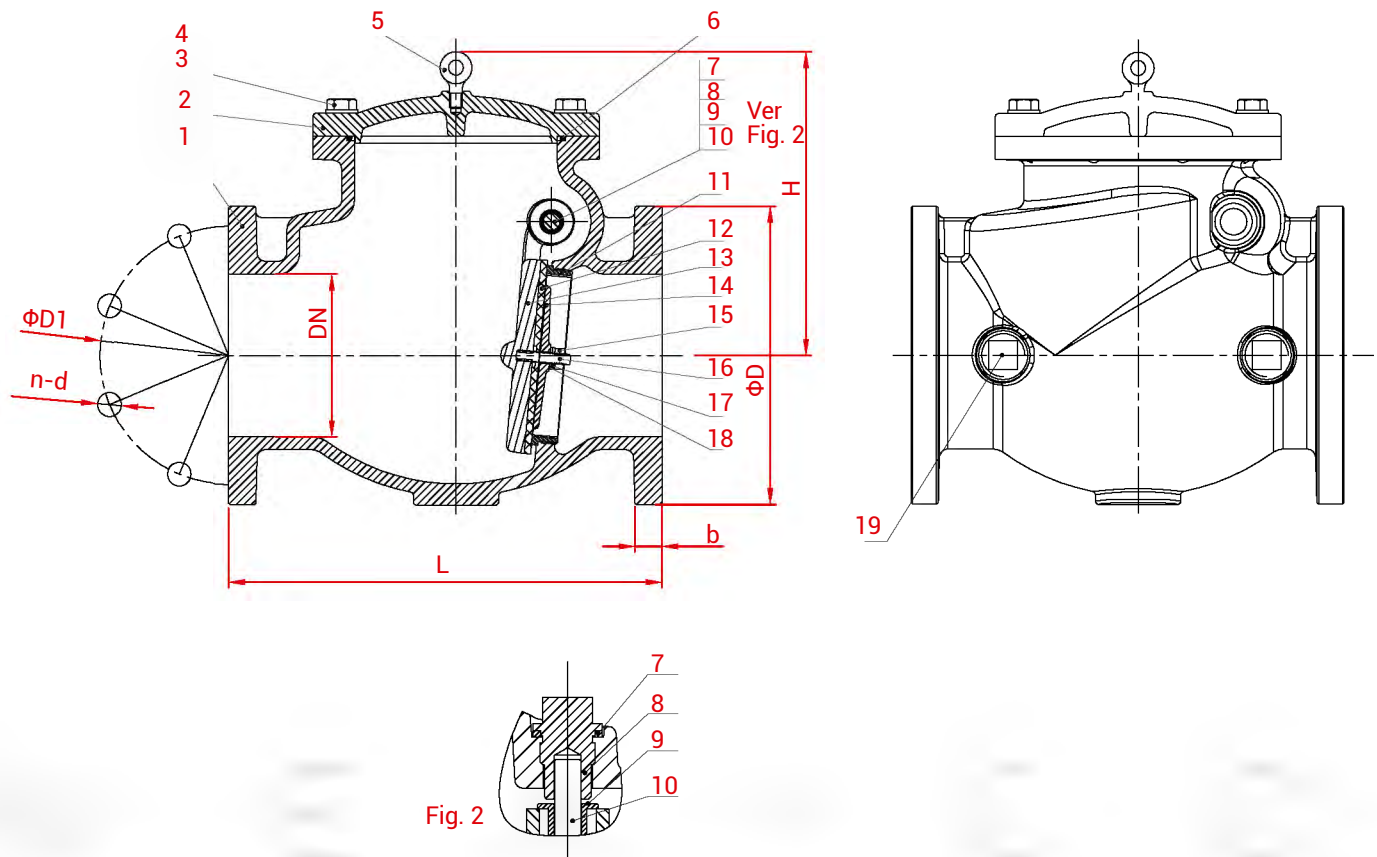


SUBMITTAL INFORMATION

PROJECT:	CONTRACTOR:	DATE:
ENGINEER:	SPECIFICATION REFERENCE:	SYSTEM TYPE:
LOCATIONS:	COMMENTS:	

FLANGED RESILIENT SWING CHECK VALVE

Mod. H44X2



DIMENSIONS

DN		Dimensions(mm)						
Inch	mm	L		D	D1	b	n-Φ d	H
		Standard	Optional					
2"	50	203	203	152	120.5	16	4-Φ 19.1	133
2.5"	65	254	216	178	139.5	17.5	4-Φ 19.1	150
3"	80	278	241	191	152.5	19	4-Φ 19.1	150
4"	100	330	292	229	190.5	24	8-Φ 19.1	218
6"	150	406	356	279	241.5	25.5	8-Φ 22.2	290
8"	200	495	495	343	298.5	28.5	8-Φ 22.2	330
10"	250	622	622	406	362	30.5	12-Φ 25.4	350
12"	300	660	698	483	432	32	12-Φ 25.4	376

DESIGN

We reserve the right to change or modify product designs, specifications and/or standard equipment without notice and without incurring obligation.

SALES

Prices and Terms and Conditions of Sale are subject to change without notice.

FLANGED RESILIENT SWING CHECK VALVE

Mod. H44X2

WARRANTY

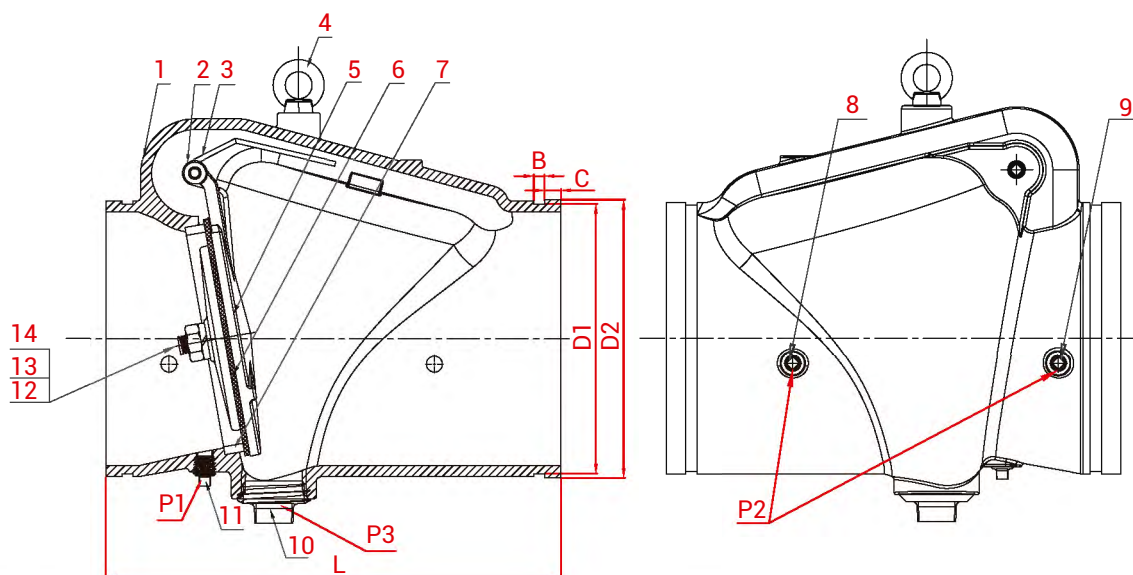
From incoming inspection to finished product, quality is checked and monitored in the whole process. Each step of the manufacturing process is carefully documented, regularly reviewed for revision control and updating standard.

Quality procedures are constantly monitored and updated to assure that only the highest and most consistent quality products are supplied to our valued customers.

For more information about warranty policy, please contact us.

GROOVED RESILIENT SWING CHECK VALVE

Mod. H84X



DIMENSIONS

DN		Dimensions(mm)								
Inch	mm	L	D1	D2	B	C	P1	P3		P2
								Standard	Optional	
2"	50	171	57.15	60.3	7.93	15.88	1/2-14NPT	1/2-14NPT	1-11.5NPT	3/8-18NPT
2.5"	65	184	69.09	73	7.93	15.88	1/2-14NPT	1/2-14NPT	1 1/4-11.5NPT	3/8-18NPT
3"	80	197	84.94	88.9	7.93	15.88	1/2-14NPT	1/2-14NPT	1 1/4-11.5NPT	3/8-18NPT
4"	100	210	110.08	114.3	9.53	15.88	1/2-14NPT	1/2-14NPT	2-11.5NPT	1/2-14NPT
5"	125	248	137.03	141.3	9.53	15.88	1/2-14NPT	1/2-14NPT	2-11.5NPT	1/2-14NPT
6"	150	324	163.96	168.3	9.53	15.88	1/2-14NPT	1/2-14NPT	2-11.5NPT	1/2-14NPT
8"	200	371	214.4	219.1	11.13	19.05	1/2-14NPT	1/2-14NPT	2-11.5NPT	1/2-14NPT
10"	250	457	268.28	273	12.7	19.05	1/2-14NPT	1/2-14NPT	2-11.5NPT	1/2-14NPT
12"	300	535	318.29	323.9	12.7	19.05	1/2-14NPT	1/2-14NPT	2-11.5NPT	1/2-14NPT

DESIGN

We reserve the right to change or modify product designs, specifications and/or standard equipment without notice and without incurring obligation.

SALES

Prices and Terms and Conditions of Sale are subject to change without notice.

WARRANTY

From incoming inspection to finished product, quality is checked and monitored in the whole process. Each step of the manufacturing process is carefully documented, regularly reviewed for revision control and updating standard.

Quality procedures are constantly monitored and updated to assure that only the highest and most consistent quality products are supplied to our valued customers.

For more information about warranty policy, please contact us.

BALL VALVE

SPECIFICATIONS

Available Sizes:

From 1/2" to 2"

Working Pressure:

600 psi

- Full-Port threaded ends (1/4" to 2" with CSA/UL/FM/NSF61 Approval)
- 2 Piece Forged Brass
- Female NPT Inlet and Outlet
- 600 WOG (2 1/2" to 4":400 WOG/600 WOG Optional), 150 SWP
- Valves conform to Federal Specification WW-V-35, Type II Class A, Style 3 and MSS SP-110.

Brand:

LANSDALE

MATERIAL SPECIFICATIONS

1	Body	Forged Brass
2	End Cap	Forged Brass
3	Ball	Brass
4	Seat	PTFE
5	Stem	Brass (ASTM B16)
6	Thrust Washer	PTFE
7	Packing	PTFE
8	Gland	Brass
9	Handle	Carbon Steel Plated
10	Nut	Carbon Steel Plated



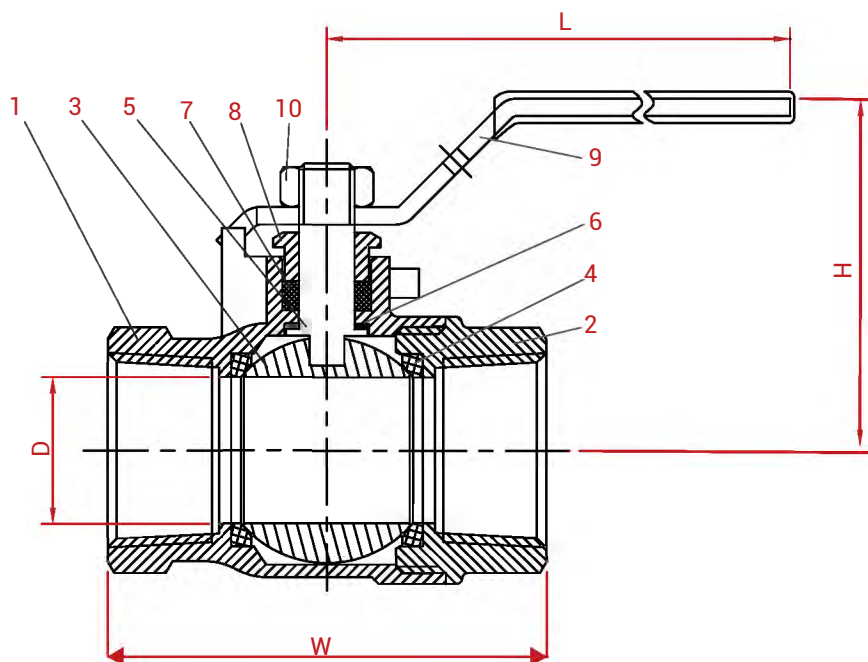
INTERNATIONAL APPROVAL



SUBMITTAL INFORMATION

PROJECT:	CONTRACTOR:	DATE:
ENGINEER:	SPECIFICATION REFERENCE:	SYSTEM TYPE:
LOCATIONS:	COMMENTS:	

BALL VALVE



DIMENSIONS

SIZE	D	W	H	L
1/2"	0.5"	2.12"	1.45"	3.23"
3/4"	0.75"	2.41"	1.78"	3.94"
1"	0.98"	2.96"	2.29"	4.72"
1 1/4"	1.22"	3.28"	2.44"	4.72"
1 1/2"	1.50"	3.67"	3.00"	7.09"
2"	1.97"	4.21"	3.30"	7.09"

DESIGN

We reserve the right to change or modify product designs, specifications and/or standard equipment without notice and without incurring obligation.

SALES

Prices and Terms and Conditions of Sale are subject to change without notice.

WARRANTY

From incoming inspection to finished product, quality is checked and monitored in the whole process. Each step of the manufacturing process is carefully documented, regularly reviewed for revision control and updating standard.

Quality procedures are constantly monitored and updated to assure that only the highest and most consistent quality products are supplied to our valued customers.

For more information about warranty policy, please contact us.

TEST AND DRAIN VALVE

SPECIFICATIONS

Used to test water flow through sprinkler systems Forged brass body with three-position ball valve (OFF-TEST-DRAIN) Integral sight glass with acrylic see-through windows 1/2" restricted orifice for system test position UL Listed/ FM Approved, Patent-ed design.

- Female NPT Inlet and Outlet.
- Forge Brass Body.
- Chrome Plated Brass Ball with Teflon Seats.

Available Sizes:

From 1" to 2"

Working Pressure:

300 PSI

Brand: **BRECCO**



MATERIAL SPECIFICATIONS

1	Body	Bronze B62
2	Body Cap	Forged Brass C37700
3	Ball	Brass B16/C37700
4	Stem	Brass B16
5	Seat	PTFE
6	Thrust Washer	PTFE
7	O-Ring	NBR D2000
8	Gland Packing	PTFE
9	Indicator Plate	Steel
10	Gland	Brass B16
11	Nut	Steel

12	Stop Screw	Stainless Steel
13	Lever	Steel
14	Handle Cover	PVC Vinyl
15	Retaining Ring	Brass B16
16	Washer	Acrylic
17	O-Ring	NBR D2000
18	Cap Plug	Brass B16

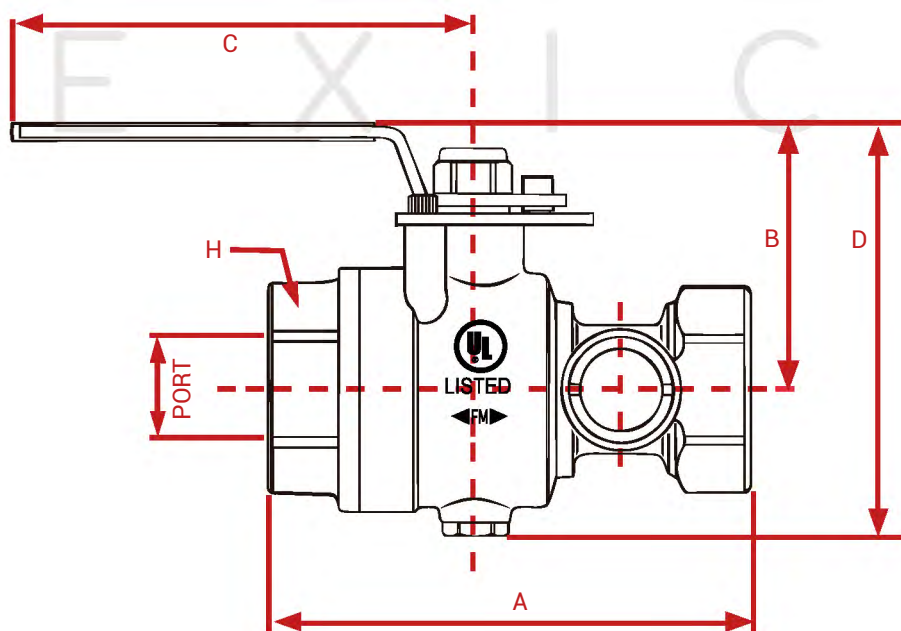
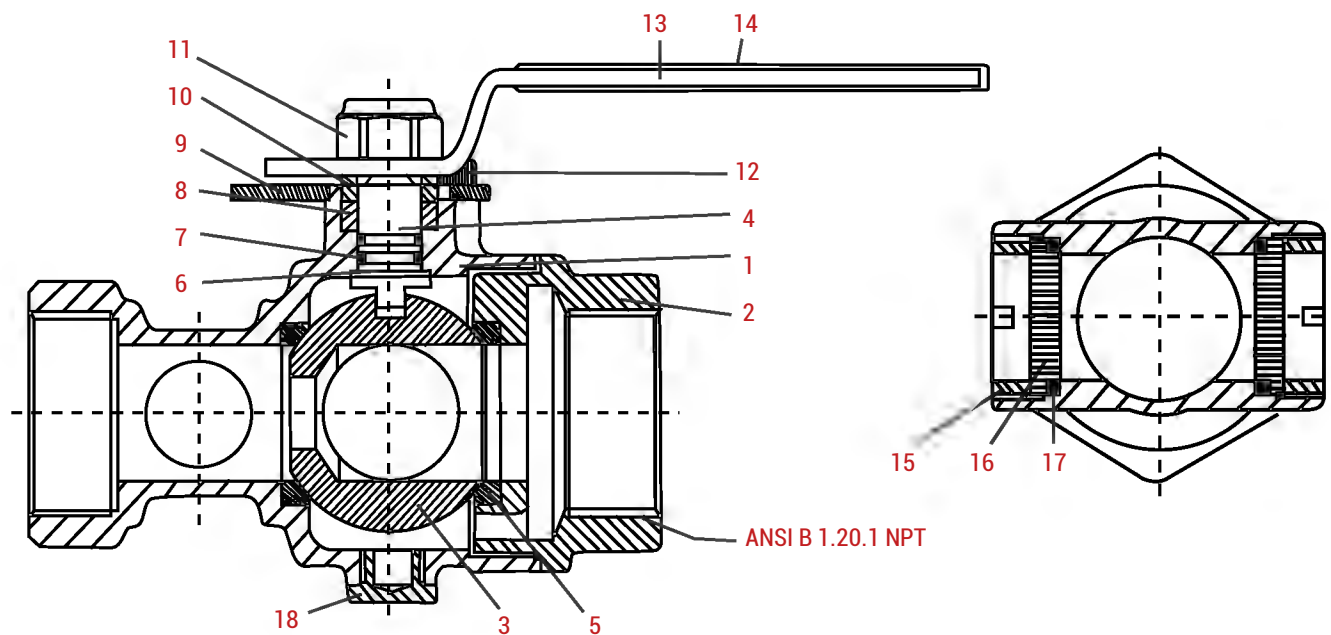
INTERNATIONAL APPROVAL



SUBMITTAL INFORMATION

PROJECT:	CONTRACTOR:	DATE:
ENGINEER:	SPECIFICATION REFERENCE:	SYSTEM TYPE:
LOCATIONS:	COMMENTS:	

TEST AND DRAIN VALVE



DIMENSIONS

a/b (Orifice)	C (Plug)	Port	A	B	C	D	H
1" (1/2")	1/4"	1 1/16"	5 1/32"	2 43/64"	5 11/32"	4 27/64"	2 "
1-1/4" (1/2")	1/4"	1 1/16"	5 1/32"	2 43/64"	5 11/32"	4 27/64"	2 "
1-1/2" (1/2")	NA	1 3/4"	6.811 "	5 "	6.1811 "	5 "	3 "
2" (1/2")	NA	1 3/4"	6.811 "	5 "	6.1811 "	5 "	3 "

TEST AND DRAIN VALVE

DESIGN

We reserve the right to change or modify product designs, specifications and/or standard equipment without notice and without incurring obligation.

SALES

Prices and Terms and Conditions of Sale are subject to change without notice.

WARRANTY

From incoming inspection to finished product, quality is checked and monitored in the whole process. Each step of the manufacturing process is carefully documented, regularly reviewed for revision control and updating standard.

Quality procedures are constantly monitored and updated to assure that only the highest and most consistent quality products are supplied to our valued customers.

For more information about warranty policy, please contact us.